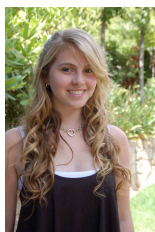


St Andrews College
2010 Instrumental Musician
Scholarship Recipients



Emma Townsend - Violin



Lydia Dobson - Piano



Georgina Piper - Cello

St Andrews College Gala Concert

Welcome – Wayne Erickson, Principal

Richard Mockler – *This is the Moment* by Frank Wildhorn
Accompanied by Neil Saunders (piano), Emma Townsend (violin 1), Lydia Dobson (violin 2),
Georgina Piper (cello)

Whitney Erickson - *I am telling you* from *Dreamgirls* by Henry Krieger

Sophie-Anna Shumack – *Lullaby of Birdland*
Accompanied by Siobhan Clayton (piano)

Georgina Piper (cello) – *Allemande* from *Cello Suite no.2* by Johann Sebastian Bach

James Clohesy – *Bittersweet Symphony* by Verve

Siobhan Clayton (piano) – *The Sprightly Ones* by Judy Bailey

Lucas Rowe, Annabel Probert, Giles Gardam (saxophones) – *Rondo alla Turca*, by
Wolfgang Amadeus Mozart, arranged by Mark Walton

Kate Williams and Megan Morris – *The Flower Duet* from *Lakmé* by Leo Delibes
Accompanied by Lydia Dobson (piano)

Emma Townsend (violin) – *Meditation* from *Thaïs* by Jules Massenet
Accompanied by Neil Saunders (piano)

Hester Wilson – *Lob des hohen Verstands (Praise of lofty intellect)* by Gustav Mahler
Accompanied by Ian Jack (piano)

Lydia Dobson (piano) – *Prelude, Opus 32, No. 12* by Sergei Rachmaninoff

Aaron Price – *Twenty something* by Jamie Cullum
Accompanied by Siobhan Clayton (piano), Giles Gardam (saxophone), Annabel Probert
(saxophone) and Alex Wilton (drums)

Hester Wilson and Whitney Erickson – *Sull' aria (the Letter Duet)* from *The Marriage of
Figaro* by Wolfgang Amadeus Mozart
Accompanied by Ian Jack (piano)

Emma Townsend (violin), Lydia Dobson (piano), Georgina Piper (cello)
– *Oblivion* by Astor Piazzolla

St Andrew's College Choral Scholar Ensemble - *You're the Voice* by John Farnham,
arranged by Gilbert Beveridge
Accompanied by Tyler Drayton (bagpipes), Alex Purdue (bass), Giles Gardam (saxophone),
Emily Scott (drums), Lydia Dobson (piano), Siobhan Clayton (keyboard)
Conducted by Melissa-Kelly Franklin