



10th January 2020

St Andrew's College Development Update

General Notices

- ▼ Works are now in full swing, so please pay extra attention to site fences, site signage and moving vehicles for your own safety.
- ▼ Western Ave vehicular gate access will now permit truck delivery access and residential parking only. To ensure pedestrian safety during the construction programme, all foot traffic will be via the Cadigal Lane staircase entry only.

Work to date

In the past fortnight we have been working on the following:

Link Building

- ▼ Level 3 – Defects process underway
- ▼ Level 4 – Defects process underway
- ▼ Level 5 – Defects process underway
- ▼ Level 6 – Ceilings closed, carpet installed to bedrooms, bathroom tiling complete
- ▼ Level 7 – Ceilings closed, carpet installed to bedrooms, bathroom tiling complete
- ▼ Level 1 – Ceiling sanded, internal glazing, membrane to bathrooms
- ▼ Level 2 – Fit off to music rooms, sheeting ceilings
- ▼ Lift – Complete and currently used as a builder's lift
- ▼ Façade – North façade patching of scaffold ties and defects, all external scaffold stripped
- ▼ External – OSD tank built and membraned, hydraulic and mechanical plant areas ongoing, landscaping underway

Reid Building

- ▼ Reid Level 5 Northern half – Defects process underway
- ▼ Existing Reid: Roughin of services, sheeting in bedrooms, carpet to bedrooms, delivery of joinery

Thyne Building

- ▼ Level 6 – Painting and fit off
- ▼ Level 5 – Roughin, ceiling framing and sheeting
- ▼ Level 4 – Roughin and ceiling framing
- ▼ Level 3 – Roughin and ceiling framing



PROJECT MANAGER
MICHAEL WATSON
0409 831 813



SITE MANAGER
ANDY MACK
0437 041 835



PROJECT SUPERVISOR
ED ADAMS
0416 130 645

To facilitate the safety of residents and staff please be cautious of work areas, read all signage and take direction from Buildcorp staff.

Monthly look-ahead

Activities taking place in the coming months will include:

- ▶ Link Building: Continue the defects process on L3 and L4
- ▶ Link Building: Start the defects process on L5,6 and Commissioning of services
- ▶ Link Building: Complete finishing trades on L7,1,2.
- ▶ Link Building: Complete Stair 1 façade
- ▶ Reid Level 5: Continue the defects process + Commissioning of services
- ▶ Existing Reid: Painting, carpet, joinery and fit off services to bedrooms and corridors. Tiling and fit off to en-suites
- ▶ External Works: Landscaping stage 1 & Hydraulic + Mechanical plant areas
- ▶ Pump room: Commissioning
- ▶ Decamp of site establishment: This will be ongoing over the next 2 months

Key Disruption Notices

Activities taking place in the coming weeks will include:

- ▶ Reid Building vacated for refurbishment works
- ▶ Thyne Building vacated at various intervals for fire and electrical upgrades



i. Southern Façade



ii. South side of Reid external works



iii. Hydrant Booster



iv. L2 Ceiling Roughin



13th December 2019

St Andrew's College Development Update

General Notices

- Works are now in full swing, so please pay extra attention to site fences, site signage and moving vehicles for your own safety.
- Western Ave vehicular gate access will now permit truck delivery access and residential parking only. To ensure pedestrian safety during the construction programme, all foot traffic will be via the Cadigal Lane staircase entry only.

Work to date

In the past fortnight we have been working on the following:

Link Building

- Level 3 – Final fit-off of services including bathrooms, carpet to corridors, initial cleaning of bedrooms. Defects process started
- Level 4 – Final fit-off of services including bathrooms, carpet to corridors, initial cleaning of bedrooms. Defects process started
- Level 5 – Ceilings closed, carpet and joinery installed to bedrooms, bathroom tiling complete
- Level 6 – Ceilings closed, carpet installed to bedrooms, bathroom tiling complete
- Level 7 – Walls closed and painting underway, carpet started install to bedrooms, bathroom tiling underway
- Level 1 – Ceiling sheeting underway
- Level 2 – Setting, sanding and painting to walls, joinery installation
- Lift – Complete and currently used as a builder's lift
- Roof – Complete
- Façade – South elevation stone installation Complete. North façade patching of scaffold ties and defects.
- External – OSD tank built and membraned, hydraulic and mechanical plant areas ongoing

Reid Building

- Reid Level 5 Northern half – Final coat of paint, initial cleaning of bedrooms
- Reid Level 5 Southern half – Final coat of paint, initial cleaning of bedrooms
- Prototype room has been updated to incorporate ongoing feedback and defects.
- Existing Reid: Strip out and structural demolition, framing of ensuites

Thyne Building

- Level 6 extension façade painting, wall sheeting continuing



PROJECT MANAGER
MICHAEL WATSON
0409 831 813



SITE MANAGER
ANDY MACK
0437 041 835



PROJECT SUPERVISOR
ED ADAMS
0416 130 645

To facilitate the safety of residents and staff please be cautious of work areas, read all signage and take direction from Buildcorp staff.

Monthly look-ahead

Activities taking place in the coming months will include:

- ▶ Link Building: Continue the defects process on L3 and L4
- ▶ Link Building: Start the defects process on L5,6 + Commissioning of services
- ▶ Link Building: Complete finishing trades on L7,1,2.
- ▶ Link Building: Progress all façade works to allow scaffold removal
- ▶ Link Building: Complete Stair 1 façade
- ▶ Reid Level 5: Start the defects process + Commissioning of services
- ▶ External Works – Progress OSD, Landscaping stage 1 & Hydraulic + Mechanical plant areas
- ▶ Pump room: Commissioning

Key Disruption Notices

Activities taking place in the coming weeks will include:

- ▶ Reid Building vacated for refurbishment works
- ▶ Thyne Building vacated at various intervals for fire and electrical upgrades



i. OSD tank



ii. Thyne façade scaffold removal



iii. Framing to existing Reid ensuites



iv. External works underway



15th November 2019

St Andrew's College Development Update

General Notices

- ▼ Works are now in full swing, so please pay extra attention to site fences, site signage and moving vehicles for your own safety.
- ▼ Western Ave vehicular gate access will now permit truck delivery access and residential parking only. To ensure pedestrian safety during the construction programme, all foot traffic will be via the Cadigal Lane staircase entry only.

Work to date

In the past fortnight we have been working on the following:

- ▼ Services rough in L1, L2, L6 and L7
- ▼ Closing walls on levels 5, 6 and 7
- ▼ Structural steel install to stair 1 roof and façade
- ▼ Tiling to L5 bathrooms
- ▼ Membrane to L6 bathrooms
- ▼ Ceiling sheeting to L3 corridor ceilings
- ▼ Roof battens to stair 1 roof
- ▼ Painting to L5 and L6
- ▼ Render to north façade
- ▼ Builders Lift commissioned
- ▼ Thyne roof installation
- ▼ Joinery installing to L5
- ▼ Fitting off services to L5

2-week look-ahead

Activities taking place in the coming weeks will include:

- ▼ Remaining façade detailing
- ▼ Services rough in & internal wall framing continuing
- ▼ Closing walls to L1 and L2
- ▼ Scaffold strip for Link
- ▼ Joinery install to L3 and L4
- ▼ Fitting off services to L3, L4 and L5
- ▼ Remaining services rough in & internal wall framing
- ▼ Tiling to bathrooms L6
- ▼ Membrane to bathrooms L7



PROJECT MANAGER
MICHAEL WATSON
0409 831 813



SITE MANAGER
ANDY MACK
0437 041 835



PROJECT SUPERVISOR
ED ADAMS
0416 130 645

To facilitate the safety of residents and staff please be cautious of work areas, read all signage and take direction from Buildcorp staff.

3 month look-ahead

Activities taking place in the coming months will include:

- Services rough in & internal wall framing
- Reid level 5 extension
- Pump room at Thyne Building
- External works including OSD tank and landscaping underway
- Scaffold strip to remainder of project

Disruption Notices

Activities taking place in the coming weeks will include:

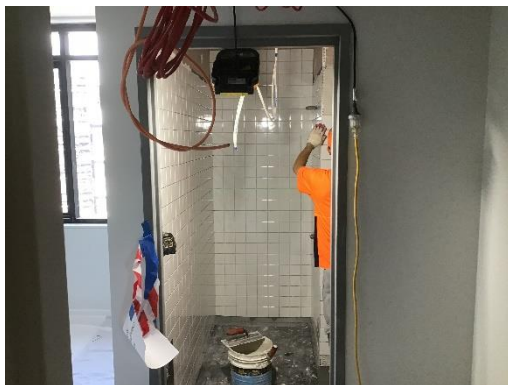
- Intermittent access to Thyne building
- Access to ground floor of Reid for communications cable rough in



i. OSD tank excavation



ii. Setting to L7



iii. Scaffold drop to Reid



iv. Brick patching to Reid



1st November 2019

St Andrew's College Development Update

General Notices

- ▼ Works are now in full swing, so please pay extra attention to site fences, site signage and moving vehicles for your own safety.
- ▼ Western Ave vehicular gate access will now permit truck delivery access and residential parking only. To ensure pedestrian safety during the construction programme, all foot traffic will be via the Cadigal Lane staircase entry only.

Work to date

In the past fortnight we have been working on the following:

- ▼ Services rough in
- ▼ Closing walls on levels 5 and 6
- ▼ Formwork, reinforcement and concrete to stair 1 - level 5-6 and 6-7
- ▼ Install structural steel stair install to level 5-6 and 6-7
- ▼ Tiling to L3 and L4 bathrooms
- ▼ Membrane to L5 bathrooms
- ▼ Ceiling sheeting to L7 ceiling
- ▼ Framing and roof install to Thyne roof
- ▼ Painting to southern façade
- ▼ Painting to L3 and L4
- ▼ Render to north facade

2-week look-ahead

Activities taking place in the coming weeks will include:

- ▼ Façade works
- ▼ Lift install on going
- ▼ Services rough in & internal wall framing continuing
- ▼ Closing walls
- ▼ Scaffold strip ongoing for Reid
- ▼ Thyne roof installation
- ▼ Reid roof completion over stair 1
- ▼ Stair 1 façade structural steel
- ▼ Completion of Link roof structural steel over stair 1



PROJECT MANAGER
MICHAEL WATSON
0409 831 813



SITE MANAGER
ANDY MACK
0437 041 835



PROJECT SUPERVISOR
ED ADAMS
0416 130 645

To facilitate the safety of residents and staff please be cautious of work areas, read all signage and take direction from Buildcorp staff.

3 month look-ahead

Activities taking place in the coming months will include:

- Services rough in & internal wall framing
- Reid level 5 extension
- Pump room at Thyne Building
- External works including OSD tank and landscaping underway
- Scaffold strip to remainder of project

Disruption Notices

Activities taking place in the coming weeks will include:

- Intermittent access to Thyne building
- Access to ground floor of Reid for communications cable rough in



i. Scaffold drop to Reid



ii. Painting to L3



iii. Tiling to L3



iv. Ceilings to L7



18th October 2019

St Andrew's College Development Update

General Notices

- ▼ Works are now in full swing, so please pay extra attention to site fences, site signage and moving vehicles for your own safety.
- ▼ Western Ave vehicular gate access will now permit truck delivery access and residential parking only. To ensure pedestrian safety during the construction programme, all foot traffic will be via the Cadigal Lane staircase entry only.

Work to date

In the past fortnight we have been working on the following:

- ▼ Ceramic tile install to Link roof
- ▼ Services rough in
- ▼ Closing walls on levels 3 and 4
- ▼ Formwork, reinforcement and concrete to stair 1 - level 4-5
- ▼ Install structural steel stair install to level 4-5
- ▼ Window install to L6 Reid extension
- ▼ Screed to L3 bathrooms
- ▼ Membrane to L4 and L5 bathrooms
- ▼ Face brick to Reid extension
- ▼ External framing to L7
- ▼ Window sub-framing and framing install to L7
- ▼ Dropping Reid extension and Thyne extension scaffolds
- ▼ Structural steel install for Thyne roof

2-week look-ahead

Activities taking place in the coming weeks will include:

- ▼ Façade works
- ▼ Roof tiles ongoing
- ▼ Lift install on going
- ▼ Services rough in & internal wall framing continuing
- ▼ Closing walls
- ▼ Scaffold strip ongoing for Reid
- ▼ Thyne roof framing and installation
- ▼ Reid roof completion
- ▼ Stair 1 façade structural steel
- ▼ completion of Link roof structural steel



PROJECT MANAGER
MICHAEL WATSON
0409 831 813



SITE MANAGER
ANDY MACK
0437 041 835



PROJECT SUPERVISOR
ED ADAMS
0416 130 645

To facilitate the safety of residents and staff please be cautious of work areas, read all signage and take direction from Buildcorp staff.

3 month look-ahead

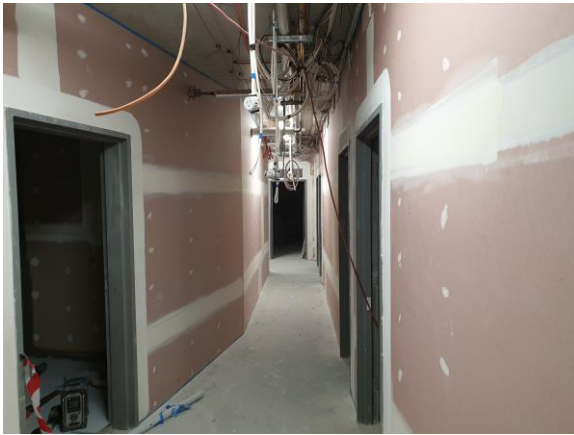
Activities taking place in the coming months will include:

- ▼ Roof install completion to Link building
- ▼ Services rough in & internal wall framing
- ▼ Façade works
- ▼ Reid level 5 extension
- ▼ Pump room at Thyne Building

Disruption Notices

Activities taking place in the coming weeks will include:

- ▼ Intermittent access to Thyne building
- ▼ Access to ground floor of Reid for communications cable rough in



iii. Closing Walls Level 3



iv. Reid Extension



iii. Steel Stair Install



iv. Link Roof



4th October 2019

St Andrew's College Development Update

General Notices

- ▼ Works are now in full swing, so please pay extra attention to site fences, site signage and moving vehicles for your own safety.
- ▼ Western Ave vehicular gate access will now permit truck delivery access and residential parking only. To ensure pedestrian safety during the construction programme, all foot traffic will be via the Cadigal Lane staircase entry only.



PROJECT MANAGER
MICHAEL WATSON
0409 831 813

Work to date

In the past fortnight we have been working on the following:

- ▼ Ceramic tile install to Link roof
- ▼ Services rough in
- ▼ Framing and sheeting 1 side to L3-L6
- ▼ Lift install ongoing
- ▼ Formwork, reinforcement and concrete to stair 1 - level 3-4
- ▼ On site glazing for L5 Reid windows
- ▼ L6 window installation
- ▼ Membrane to L3 bathrooms
- ▼ Face brick to Reid extension
- ▼ External framing to L7



SITE MANAGER
ANDY MACK
0437 041 835

2-week look-ahead

Activities taking place in the coming weeks will include:

- ▼ Façade works
- ▼ External framing to L7
- ▼ Roof tiles commencing
- ▼ Lift install
- ▼ Services rough in & internal wall framing continuing
- ▼ Closing walls
- ▼ Scaffold strip commencing for Reid



PROJECT SUPERVISOR
ED ADAMS
0416 130 645

To facilitate the safety of residents and staff please be cautious of work areas, read all signage and take direction from Buildcorp staff.

3 month look-ahead

Activities taking place in the coming months will include:

- ▼ Roof install completion to Link building
- ▼ Services rough in & internal wall framing
- ▼ Façade works
- ▼ Reid level 5 extension
- ▼ Pump room at Thyne Building

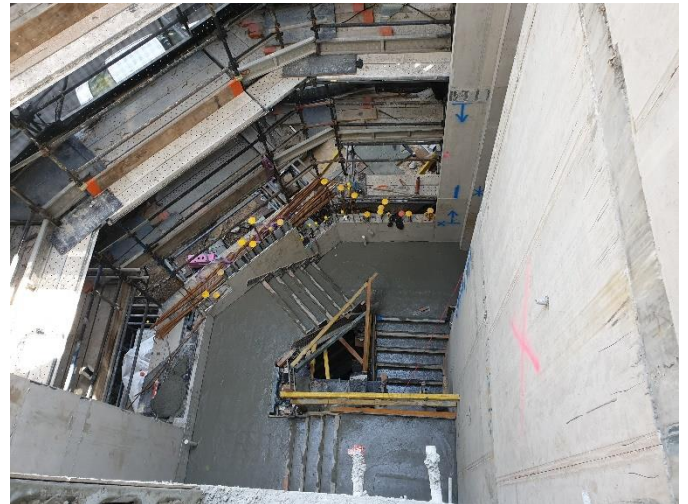
Disruption Notices

Activities taking place in the coming weeks will include:

- ▼ Intermittent access to Thyne building
- ▼ Access to ground floor of Reid for communications cable rough in



i. Link Roof Tiles



ii. Stair 1 Level 3 – Level 4



iii. Face Brick L6



iv. Waterproofing to Level 3 bathroom

20th September 2019

St Andrew's College Development Update

General Notices

- Works are now in full swing, so please pay extra attention to site fences, site signage and moving vehicles for your own safety.
- Western Ave vehicular gate access will now permit truck delivery access and residential parking only. To ensure pedestrian safety during the construction programme, all foot traffic will be via the Cadigal Lane staircase entry only.

Work to date

In the past fortnight we have been working on the following:

- Roof works to L7 Link commenced
- Services rough in
- Framing and sheeting 1 side to L3-L6
- Blockwork to south façade
- Window install to L3 and L4 south façade and L5 Reid
- Lift install commenced
- Formwork and reinforcement to stair 1 - level 1 - 2

2-week look-ahead

Activities taking place in the coming weeks will include:

- Façade works
- External framing to L7
- Roof tiles commencing
- Lift install
- Services rough in & internal wall framing continuing
- Closing walls



PROJECT MANAGER
MICHAEL WATSON
0409 831 813



SITE MANAGER
ANDY MACK
0437 041 835



PROJECT SUPERVISOR
ED ADAMS
0416 130 645

To facilitate the safety of residents and staff please be cautious of work areas, read all signage and take direction from Buildcorp staff.

3 month look-ahead

Activities taking place in the coming months will include:

- ▼ Roof install to Link building
- ▼ Services rough in & internal wall framing
- ▼ Façade works
- ▼ Reid level 5 extension
- ▼ Pump room at Thyne Building

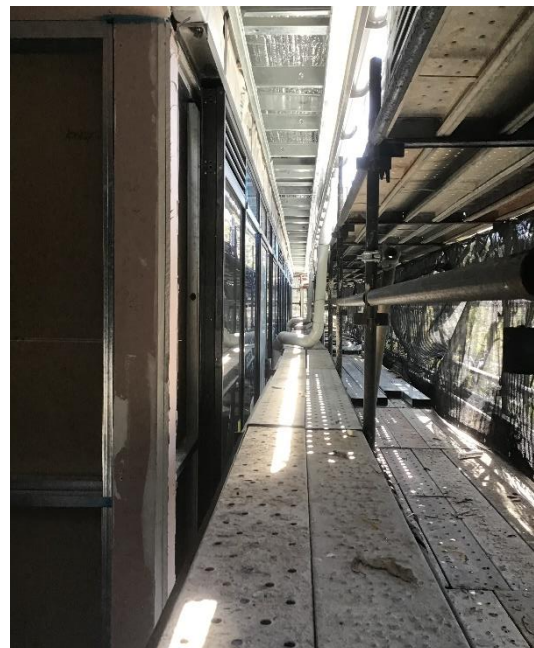
Disruption Notices

Activities taking place in the coming weeks will include:

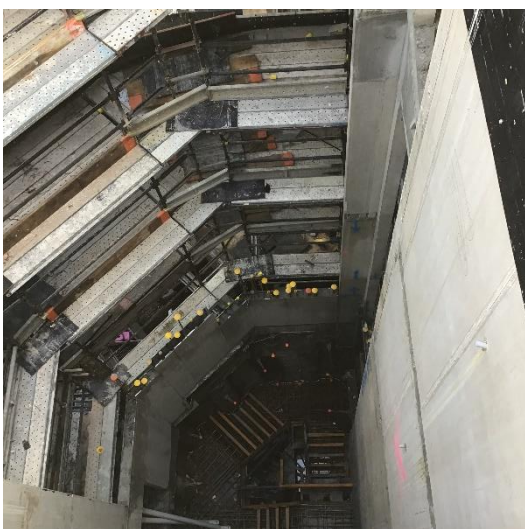
- ▼ Intermittent access to Thyne building
- ▼ Access to ground floor of Reid for communications cable rough in



i. Link Roof



ii. L5 Reid Windows



iii. Stair 1



iv. L5 Reid Services

6th September 2019

St Andrew's College Development Update

General Notices

- ▼ Works are now in full swing, so please pay extra attention to site fences, site signage and moving vehicles for your own safety.
- ▼ Western Ave vehicular gate access will now permit truck delivery access and residential parking only. To ensure pedestrian safety during the construction programme, all foot traffic will be via the Cadigal Lane staircase entry only.

The St Andrew's College project has now topped out, with the roof to Link building to be installed in the coming weeks.

Work to date

In the past fortnight we have been working on the following:

- ▼ Structural steel install to L7 Link
- ▼ Install, reinforcement and concrete to remaining lift shaft and stair walls
- ▼ Roof works to L7 Link commenced
- ▼ Thyne demolition
- ▼ Services rough in
- ▼ Framing and sheeting to L3
- ▼ Framing to L4
- ▼ Ceiling install to L5
- ▼ Installation of crane deck to L5 and L6
- ▼ Blockwork to L1, L2 and L2/3/4 façade
- ▼ Stripping formwork of L5 and L6

2-week look-ahead

Activities taking place in the coming weeks will include:

- ▼ Façade works
- ▼ Lift install commencing
- ▼ Services rough in & internal wall framing continuing
- ▼ Thyne demolition and strip out
- ▼ Completion of remaining structural steel install for the roof to Link



PROJECT MANAGER
MICHAEL WATSON
0409 831 813



SITE MANAGER
ANDY MACK
0437 041 835



PROJECT SUPERVISOR
ED ADAMS
0416 130 645

To facilitate the safety of residents and staff please be cautious of work areas, read all signage and take direction from Buildcorp staff.

3 month look-ahead

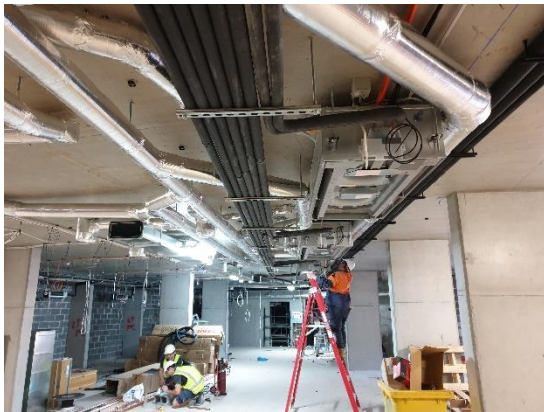
Activities taking place in the coming months will include:

- ▼ Roof install to Link building
- ▼ Services rough in & internal wall framing
- ▼ Façade works
- ▼ Reid level 5 extension
- ▼ Pump room at Thyne Building

Disruption Notices

Activities taking place in the coming weeks will include:

- ▼ Intermittent access to Thyne building
- ▼ Access to ground floor of Reid for communications cable rough in



i. Services to L2



ii. L3 framing and sheeting



iii. L5 Ceiling



iv. Link Roof

23rd August 2019

St Andrew's College Development Update

General Notices

- ▼ Works are now in full swing, so please pay extra attention to site fences, site signage and moving vehicles for your own safety.
- ▼ Western Ave vehicular gate access will now permit truck delivery access and residential parking only. To ensure pedestrian safety during the construction programme, all foot traffic will be via the Cadigal Lane staircase entry only.

The St Andrew's College project has now topped out, with the roof to Link building to be installed in the coming weeks.

Work to date

In the past fortnight we have been working on the following:

- ▼ Formwork, reinforcement and concrete to L7
- ▼ Structural steel install for L6
- ▼ Structural steel install for L7
- ▼ Structural steel install for stair extension
- ▼ Services rough in
- ▼ Roof install to Reid
- ▼ Installation of crane deck to L4
- ▼ Set out and framing for partitions to L2 and L3 Link and L5 Reid

2-week look-ahead

Activities taking place in the coming weeks will include:

- ▼ Façade works
- ▼ Services rough in & internal wall framing continuing
- ▼ Thyne demolition and strip out
- ▼ Structural steel install for the roof to Link Level 7
- ▼ Stripping formwork to the remainder of the project



PROJECT MANAGER
MICHAEL WATSON
0409 831 813



SITE MANAGER
ANDY MACK
0437 041 835



PROJECT SUPERVISOR
ED ADAMS
0416 130 645

To facilitate the safety of residents and staff please be cautious of work areas, read all signage and take direction from Buildcorp staff.

3 month look-ahead

Activities taking place in the coming months will include:

- ▼ Roof install to Link building
- ▼ Services rough in & internal wall framing
- ▼ Façade works
- ▼ Reid level 5 extension
- ▼ Pump room at Thyne Building

Disruption Notices

Activities taking place in the coming weeks will include:

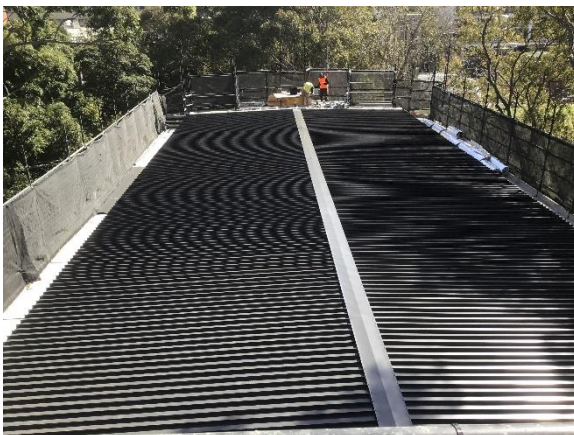
- ▼ Intermittent access to Thyne building
- ▼ Access to ground floor of Reid for communications cable rough in



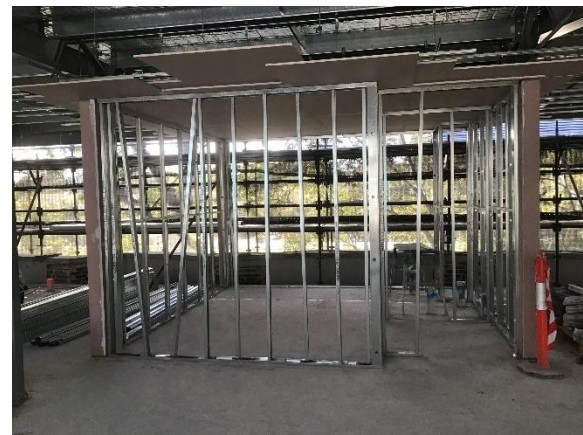
i. Concrete to L7



ii. Reinforcement to L7



iii. Roof to Reid



iv. Prototype Room

9th August 2019

St Andrew's College Development Update

General Notices

- Works are now in full swing, so please pay extra attention to site fences, site signage and moving vehicles for your own safety.
- Western Ave vehicular gate access will now permit truck delivery access and residential parking only. To ensure pedestrian safety during the construction programme, all foot traffic will be via the Cadigal Lane staircase entry only.

Work to date

In the past fortnight we have been working on the following:

- Concrete to L5 slab
- Formwork, reinforcement and concrete to L5/L6 columns
- Formwork and reinforcement to L6
- Concrete to L6 slab
- Structural steel columns to L5 Reid and L6 extension
- Structural steel to Reid roof
- Installation of hoist
- Installation of crane deck to L3
- Demolition to Thyne Building

2-week look-ahead

Activities taking place in the coming weeks will include:

- Structural steel install for L6
- Formwork, reinforcement and concrete to L7 and topping out
- Façade works
- Services rough in & internal wall framing
- Formwork, reinforcement and concrete to Thyne L6
- Thyne demolition and strip out



PROJECT MANAGER
MICHAEL WATSON
0409 831 813



SITE MANAGER
ANDY MACK
0437 041 835



PROJECT SUPERVISOR
ED ADAMS
0416 130 645

To facilitate the safety of residents and staff please be cautious of work areas, read all signage and take direction from Buildcorp staff.

3 month look-ahead

Activities taking place in the coming months will include:

- ▼ Structural steel & roofing to Link Level 7
- ▼ Services rough in & internal wall framing
- ▼ Façade works
- ▼ Reid level 5 extension
- ▼ Pump room at Thyne Building

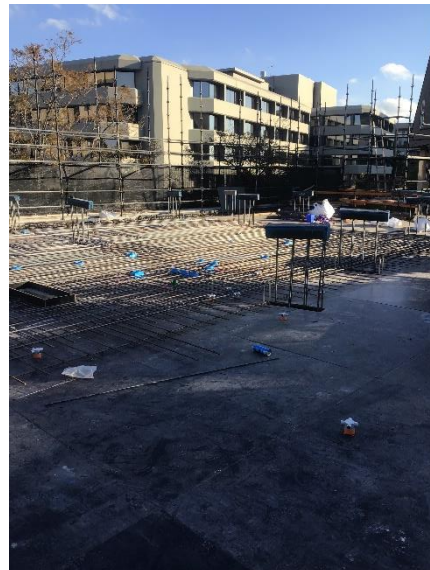
Disruption Notices

Activities taking place in the coming weeks will include:

- ▼ Services will be turned off and on intermittently over the next 2 weeks as they are uncovered during the Thyne works.



i. Structural Steel to Reid Roof



ii. Reinforcement to L6



iii. Concrete pour to L6



iv. Hoist and platform install



12th July 2019

St Andrew's College Development Update

General Notices

- ▼ Works are now in full swing, so please pay extra attention to site fences, site signage and moving vehicles for your own safety.
- ▼ Western Ave vehicular gate access will now permit truck delivery access and residential parking only. To ensure pedestrian safety during the construction programme, all foot traffic will be via the Cadigal Lane staircase entry only.

Work to date

In the past fortnight we have been working on the following:

- ▼ Formwork and reinforcement to level 3 columns and walls
- ▼ Formwork and reinforcement to level 4 slab
- ▼ Concrete to level 2 & 3 walls and columns
- ▼ Services rough-in
- ▼ Concrete to level 3 slab
- ▼ Blockwork walls to pump room
- ▼ Demolition of roof slab to Reid – Ongoing
- ▼ Thyne Building – Level 5 fire upgrade

2-week look-ahead

Activities taking place in the coming weeks will include:

- ▼ Formwork and reinforcement to level 4 & 5 slab
- ▼ Formwork and reinforcement to level 3/4 columns and walls
- ▼ Concrete to level 4 slab
- ▼ Concrete to level 3 column and walls
- ▼ Demolition to Reid roof slab and column stubs
- ▼ Installation of structural steel to Reid roof
- ▼ Concrete roof and services for pump room
- ▼ Thyne Building – Level 5 fire upgrade



PROJECT MANAGER
MICHAEL WATSON
0409 831 813



SITE MANAGER
ANDY MACK
0437 041 835



PROJECT SUPERVISOR
ED ADAMS
0416 130 645

To facilitate the safety of residents and staff please be cautious of work areas, read all signage and take direction from Buildcorp staff.

3 month look-ahead

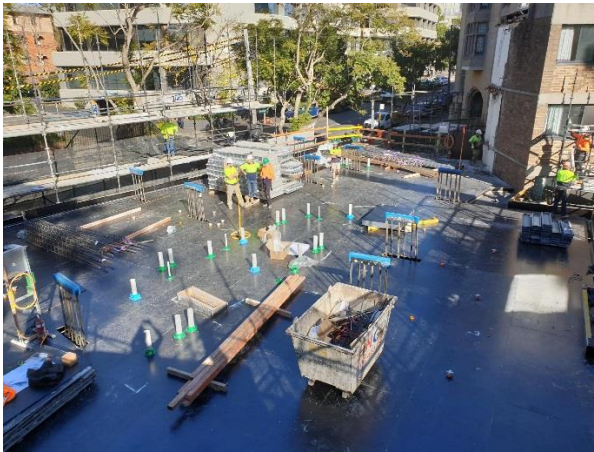
Activities taking place in the coming months will include:

- ▼ Formwork, Reinforcement and Concrete for slab and verticals to levels 5 – 7
- ▼ Structural steel & roofing to Link Level 7
- ▼ Services rough in & internal wall framing
- ▼ Façade works
- ▼ Reid level 5 extension
- ▼ Pump room at Thyne Building
- ▼ Thyne Building fire upgrades

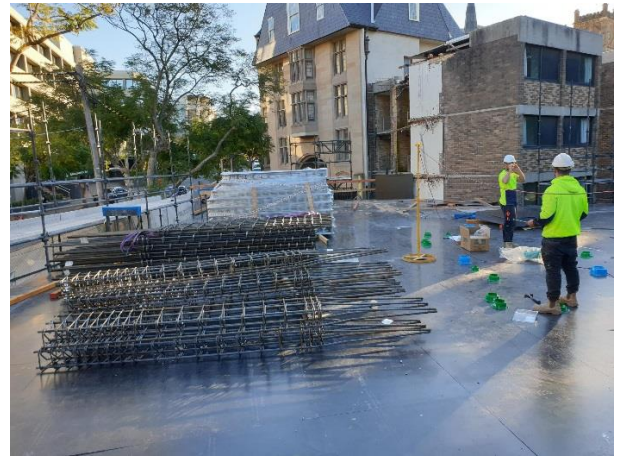
Disruption Notices

Activities taking place in the coming weeks will include:

- ▼ Nil to report



i.Level 4 formed deck



i.Level 4 column reinforcement



i.Scaffold erection



i.Reid Building Level 5 works

17th May 2019

St Andrew's College Development Update

General Notices

- Works are now in full swing, so please pay extra attention to site fences, site signage and moving vehicles for your own safety.
- Western Ave vehicular gate access will now permit truck delivery access and residential parking only. To ensure pedestrian safety during the construction programme, all foot traffic will be via the Cadigal Lane staircase entry only.

Work to date

In the past fortnight we have been working on the following:

- Bulking out of excavation material – Ongoing
- Shotcrete to final drop – Ongoing
- Anchor installation – Ongoing

2-week look-ahead

Activities taking place in the coming weeks will include:

- Completion of bulk out for excavation
- Completion of shotcrete
- Detailed excavation
- In-ground drainage
- Membrane to lift shaft
- Completion of the perimeter scaffold to Reid Building
- Form, Reo & Pour Footings

3 month look-ahead

Activities taking place in the coming months will include:

- Formwork, Reinforcement and Concrete for slab and verticals to levels 1 - 5
- Reid level 5 extension
- Pump room at Thyne Building
- Thyne Building fire upgrades



PROJECT MANAGER
MICHAEL WATSON
0409 831 813



SITE MANAGER
ANDY MACK
0437 041 835



PROJECT SUPERVISOR
ED ADAMS
0416 130 645

To facilitate the safety of residents and staff please be cautious of work areas, read all signage and take direction from Buildcorp staff.



Anchor drilling rig



Shotcrete wall



Bulk excavation and loading out

3rd May 2019

St Andrew's College Development Update

General Notices

- Works are now in full swing, so please pay extra attention to site fences, site signage and moving vehicles for your own safety.
- Western Ave vehicular gate access will now permit truck delivery access and residential parking only. To ensure pedestrian safety during the construction programme, all foot traffic will be via the Cadigal Lane staircase entry only.

Work to date

In the past fortnight we have been working on the following:

- Bulking out of excavation material – Ongoing
- Shotcrete to second drop – Complete
- Anchor installation – Ongoing

2-week look-ahead

Activities taking place in the coming weeks will include:

- Completion of bulk out for excavation
- Installation of remaining anchors
- Completion of shotcrete
- Detailed excavation
- In-ground drainage
- Membrane to lift shaft
- Commence of perimeter scaffold to Reid Building

3 month look-ahead

Activities taking place in the coming months will include:

- Formwork, Reinforcement and Concrete for slab and verticals to levels 1 - 5
- Reid level 5 extension
- Pump room at Thyne Building
- Thyne Building fire upgrades



PROJECT MANAGER
MICHAEL WATSON
0409 831 813



SITE MANAGER
ANDY MACK
0437 041 835



PROJECT SUPERVISOR
ED ADAMS
0416 130 645

To facilitate the safety of residents and staff please be cautious of work areas, read all signage and take direction from Buildcorp staff.

Disruption Notices

Upcoming disruptions notices include:

- ▶ New power changeover – Date: TBC
- ▶ Floating in of drilling rig – Date: 04/05/19
- ▶ Floating out of 20t Excavator – Date: 04/04/19
- ▶ Floating out drilling rig – Date: TBC



i. Excavation nearing completion



ii. Installation of anchors



iii. Reinforcement for shotcrete



IV. Shotcrete to southern elevation



18th April 2019

St Andrew's College Development Update

General Notices

- Works are now in full swing, so please pay extra attention to site fences, site signage and moving vehicles for your own safety.
- Western Ave vehicular gate access will now permit truck delivery access and residential parking only. To ensure pedestrian safety during the construction programme, all foot traffic will be via the Cadigal Lane staircase entry only.



PROJECT MANAGER
MICHAEL WATSON
0409 831 813

Work to date

In the past fortnight we have been working on the following:

- Installation of anchors to initial drop – Complete
- Shotcrete to initial drop – Complete
- Bulking out for TRL excavation – Ongoing
- Render to lift shaft – Complete
- Glazing installation – Complete
- Stripping of scaffold stair – Complete
- Removal of hoardings to catering – Complete
- Ground and level 1 lift lobbies – Complete
- Commissioning of lift – Complete
- Practical Completion for Separable Portion 3 achieved on 18/3/19 (Catering External Works & Lift)



SITE MANAGER
ANDY MACK
0437 041 835



PROJECT SUPERVISOR
ED ADAMS
0416 130 645

To facilitate the safety of residents and staff please be cautious of work areas, read all signage and take direction from Buildcorp staff.

Upcoming Work

Activities taking place in the coming weeks will include:

- Continue to bulk out for excavation to TRL
- Installation of remaining anchors for TRL
- Shotcrete to TRL
- Detailed excavation to TRL
- In-ground drainage to TRL
- Membrane to capping beam and lift shaft for TRL
- SOG Level 1 to TRL

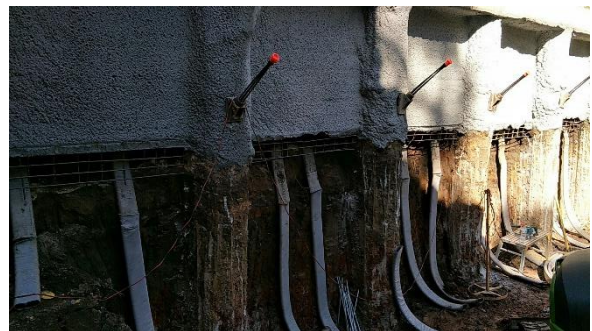
Disruption Notices

Upcoming disruptions notices include:

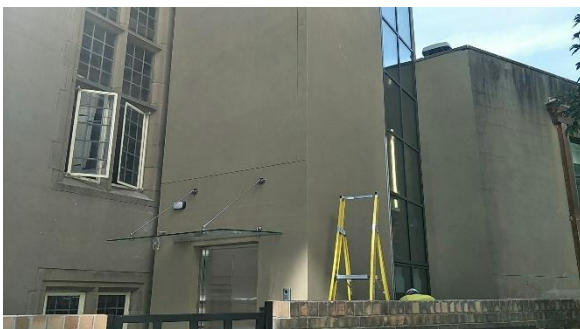
- New power changeover – Date: TBC
- Floating in of drilling rig – Date: TBC
- Floating out of 20t Excavator – Date: TBC



i. Rig drilling for anchors



ii. Preparation or further shotcreting



iii. New lift shaft



IV. Internal view of new lift



5th April 2019

St Andrew's College Development Update

General Notices

- ▼ Works are now in full swing, so please pay extra attention to site fences, site signage and moving vehicles for your own safety.
- ▼ Western Ave vehicular gate access will now permit truck delivery access and residential parking only. To ensure pedestrian safety during the construction programme, all foot traffic will be via the Cadigal Lane staircase entry only.



PROJECT MANAGER
MICHAEL WATSON
0409 831 813

Work to date

- ▼ On Tuesday Buildcorp successfully completed handover of the first stage of the Catering portion of works. This comprised of the level 1 kitchen fit-out. Photos below show some of the works completed.

In the past fortnight we have also been working on the following:

- ▼ Bulking out for TRL excavation – Ongoing
- ▼ Construction of new MSB room - Ongoing
- ▼ FRP to footpath and ground level lift lobby slab at Catering - Complete
- ▼ Render to Lift Shaft for Catering – Ongoing
- ▼ Installation of lift to Catering – Ongoing
- ▼ Erection of scaffold to lift shaft for the installation of the glazing and completion of rendering works to Catering – Complete
- ▼ Installation of framing for glazing to Catering – Ongoing



SITE MANAGER
ANDY MACK
0437 041 835



PROJECT SUPERVISOR
ED ADAMS
0416 130 645

To facilitate the safety of residents and staff please be cautious of work areas, read all signage and take direction from Buildcorp staff.

Upcoming Work

Activities taking place in the coming weeks will include:

- ▼ Continue to bulk out for excavation to TRL
- ▼ Excavation and installation of anchors for TRL
- ▼ Detailed excavation to TRL
- ▼ In-ground drainage to TRL
- ▼ Membrane to capping beam and lift shaft for TRL
- ▼ Pouring of concrete for remaining external works to Catering
- ▼ Installation of balustrades to Catering
- ▼ Fit out of lift ground and level 1 lift lobbies
- ▼ Completion of render for lift shaft to Catering
- ▼ Installation and commissioning of lift to Catering

Disruption Notices

Upcoming disruptions notices include:

- ▼ New power changeover – Date: 18th April 2019



I. Completed Servery



ii. Completed production room in kitchen



iii. Anchors being drilled



iv. FRP to remaining capping beams



22nd March 2019

St Andrew's College Development Update

General Notices

- ▼ Works are now in full swing, so please pay extra attention to site fences, site signage and moving vehicles for your own safety.
- ▼ Western Ave vehicular gate access will now permit truck delivery access and residential parking only. To ensure pedestrian safety during the construction programme, all foot traffic will be via the Cadigal Lane staircase entry only.



PROJECT MANAGER
MICHAEL WATSON
0409 831 813

Work to date

In the past fortnight we have been working on the following:

- ▼ Piling for the TRL building – Complete
- ▼ Bulking out for TRL excavation – Ongoing
- ▼ Removal of ACM for TRL - Ongoing
- ▼ Construction of new MSB room - Ongoing
- ▼ Rebuilding student access way to Reid Building – Complete
- ▼ Tiling to Catering – Ongoing
- ▼ Sheeting to ceiling and wall in dry store – Complete
- ▼ Fit-off of services to Catering Kitchen - Ongoing
- ▼ Epoxy floor to Catering - Complete
- ▼ Membrane to Catering Roof – Complete
- ▼ Joinery installation - Complete
- ▼ Kitchen equipment installation - Ongoing
- ▼ Render to Lift Shaft for Catering – Ongoing
- ▼ Perimeter Scaffold stripped to allow for external works – Complete
- ▼ Installation of lift gates to Catering - Complete
- ▼ FRP to lift over run, L1 bondeck slab and footpath to left entry – Complete
- ▼ Installation of entry gate to Catering – Complete
- ▼ External cladding/sheeting of soffit under atrium cool room - Complete



SITE MANAGER
ANDY MACK
0437 041 835



PROJECT SUPERVISOR
ED ADAMS
0416 130 645

To facilitate the safety of residents and staff please be cautious of work areas, read all signage and take direction from Buildcorp staff.

Upcoming Work

Activities taking place in the coming weeks will include:

- Removal of ACM and clearance certificate for TRL
- Continue to bulk out for excavation to TRL
- Excavation and installation of anchors for TRL
- Detailed excavation to TRL
- In-ground drainage to TRL
- Membrane to capping beam and lift shaft for TRL
- Completion of tiling and silicon joints to Catering
- Vinyl flooring to Catering
- Final painting to Catering
- Completion of fit-off and commissioning of services to Catering
- Feature timber ceiling to Catering
- Pouring of concrete for remaining external works to Catering
- Installation of balustrades to Catering
- Completion of render for lift shaft to Catering
- Installation and commissioning of kitchen equipment to Catering
- Installation of Corian benchtops to Catering
- Installation and commissioning of lift to Catering

Disruption Notices

Upcoming disruptions notices include:

- New power changeover – Date: TBC



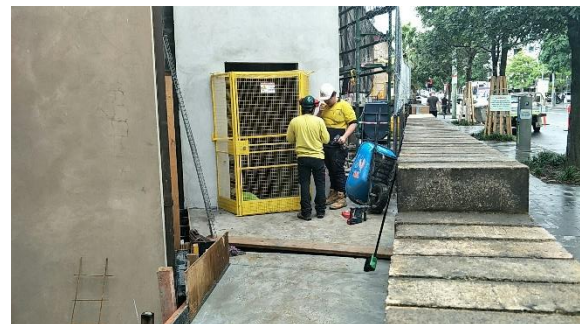
i. Bulkout for TRL



ii. Kitchen Installation for Catering



iii. Roof Plant Installation for Catering



iv. Lift Cages being Installed



8th March 2019

St Andrew's College Development Update

General Notices

- ▼ Works are now in full swing, so please pay extra attention to site fences, site signage and moving vehicles for your own safety.
- ▼ Western Ave vehicular gate access will now permit truck delivery access and residential parking only. To ensure pedestrian safety during the construction programme, all foot traffic will be via the Cadigal Lane staircase entry only.



PROJECT MANAGER
MICHAEL WATSON
0409 831 813

Work to date

In the past fortnight we have been working on the following:

- ▼ Piling for the TRL building – Ongoing
- ▼ Have begun bulking out for TRL excavation- Ongoing
- ▼ Render of blockwork wall to substation – Complete
- ▼ Installation of steel gate to substation - Complete
- ▼ Construction of new MSB room - Ongoing
- ▼ Rebuilding student access way to Reid Building – Ongoing
- ▼ Boring works cable run - Complete
- ▼ Tiling to Catering – Ongoing
- ▼ Construction of new floor to dry store/freezer room
- ▼ Freezer room construction - Complete
- ▼ Stud wall to dry store in Catering – Complete
- ▼ Sheeting to ceiling and wall in dry store – Ongoing
- ▼ First two coats of paint to ceiling – Complete
- ▼ Fit-off of services to Catering Kitchen - Ongoing
- ▼ Membrane to Catering floor – Complete
- ▼ Membrane to Catering Roof - Ongoing
- ▼ Lift shaft for Catering - Complete



SITE MANAGER
ANDY MACK
0437 041 835



PROJECT SUPERVISOR
ED ADAMS
0416 130 645

To facilitate the safety of residents and staff please be cautious of work areas, read all signage and take direction from Buildcorp staff.

Upcoming Work

Activities taking place in the coming weeks will include:

- ▼ Piling works for TRL
- ▼ Continue to bulk out for excavation to TRL
- ▼ Excavation and installation of anchors for TRL
- ▼ Detailed excavation to TRL
- ▼ Membrane to capping beam and lift shaft for TRL
- ▼ Completion of tiling to Catering
- ▼ Epoxy and vinyl flooring to Catering
- ▼ Completion of detail membrane to main Catering roof
- ▼ Feature timber ceiling to Catering
- ▼ Pouring of concrete footpaths to Catering
- ▼ External metalwork to Catering including metal gate and balustrades
- ▼ Render for lift shaft to Catering
- ▼ Strip external scaffold to complete external works to Catering
- ▼ Installation of mechanical plant to roof of Catering
- ▼ Installation of kitchen equipment to Catering
- ▼ Installation of Joinery to Catering

Disruption Notices

Upcoming disruptions notices include:

- ▼ Nil to report



i. Render to Blockwork for Substation



ii. Continue to bulk out for TRL



iii. Membrane to kitchen floor



iv. Blockwork lift shaft



22nd February 2019

St Andrew's College Development Update

General Notices

- ▼ Works are now in full swing, so please pay extra attention to site fences, site signage and moving vehicles for your own safety.
- ▼ Western Ave vehicular gate access will now permit truck delivery access and residential parking only. To ensure pedestrian safety during the construction programme, all foot traffic will be via the Cadigal Lane staircase entry only.



PROJECT MANAGER
MICHAEL WATSON
0409 831 813

Work to date

In the past fortnight we have been working on the following:

- ▼ Tying of piling cages - Complete
- ▼ Piling for the TRL building - Ongoing
- ▼ Formwork to capping beam for north elevation - Complete
- ▼ Have begun bulking out for TRL excavation- Ongoing
- ▼ Services to L2 Reid trenches - Complete
- ▼ Infill slabs poured to L2 Reid - Complete
- ▼ Construction of blockwork wall to substation - Complete
- ▼ Construction of new MSB room - Ongoing
- ▼ MSB placed in new MSB room
- ▼ Scaffold stairs for student access to Reid Building - Ongoing
- ▼ Lit pit base and shaft walls to Catering poured
- ▼ Ceiling framing to Catering - Complete
- ▼ Sheeting to Ceilings for Catering - Complete
- ▼ Construction of atrium cool room - Complete
- ▼ Wall sheeting and sarking to atrium cool room - Complete
- ▼ Ducting to Catering - Complete
- ▼ Demolition of roof to Catering - Complete
- ▼ Asbestos removal from music room under Catering - Complete
- ▼ Demolition of music room ceiling and structure - Complete
- ▼ Construction of box gutter to Catering Roof - Complete
- ▼ Penetrations to Catering roof - Complete
- ▼ Installation of plinths for kitchen equipment to Catering - Complete
- ▼ Tiling to Catering - Ongoing



SITE MANAGER
ANDY MACK
0437 041 835



PROJECT SUPERVISOR
ED ADAMS
0416 130 645

To facilitate the safety of residents and staff please be cautious of work areas, read all signage and take direction from Buildcorp staff.

Upcoming Work

Activities taking place in the coming weeks will include:

- ▼ Piling works for TRL
- ▼ Continue to bulk out for excavation to TRL
- ▼ Excavation and installation of anchors for TRL
- ▼ Builder's work to substation including steel gate
- ▼ Membrane to capping beam and lift shaft for TRL
- ▼ Tiling to Catering
- ▼ Epoxy and vinyl flooring to Catering
- ▼ Structure to dry store/cool room above music room in Catering
- ▼ Construction of internal cool room for Catering
- ▼ Construction of lift shaft for Catering
- ▼ Membrane to main Catering roof
- ▼ Feature timber ceiling to Catering
- ▼ External metalwork to Catering including metal gate and balustrades

Disruption Notices

Upcoming disruptions notices include:

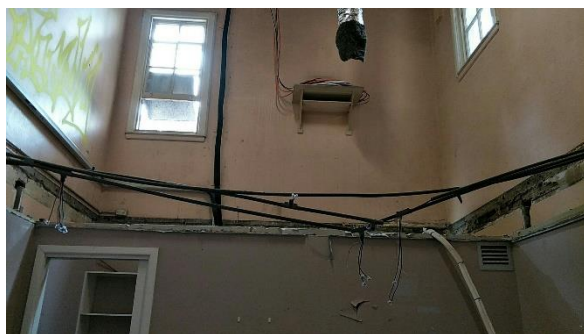
- ▼ Nil to report



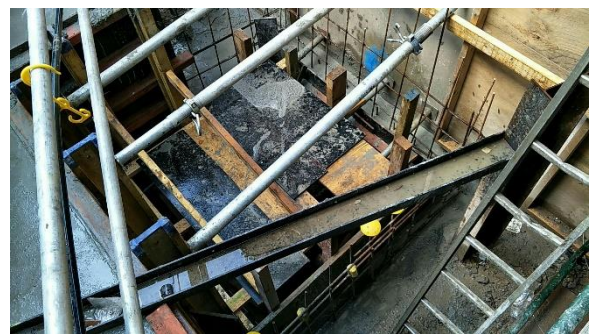
i. Blockwork Wall to Substation



ii. Bulking out for TRL



iii. Demolition of music room ceiling



iv. Lift pit and shaft walls poured



8th February 2019

St Andrew's College Development Update

General Notices

- ▼ Works are now in full swing, so please pay extra attention to site fences, site signage and moving vehicles for your own safety.
- ▼ Western Ave vehicular gate access will now permit truck delivery access and residential parking only. To ensure pedestrian safety during the construction programme, all foot traffic will be via the Cadigal Lane staircase entry only.



PROJECT MANAGER
MICHAEL WATSON
0409 831 813

Work to date

In the past fortnight we have been working on the following:

- ▼ Tying of piling cages - Ongoing
- ▼ Piling for the TRL building - Ongoing
- ▼ Capping beam for TRL to south elevation - Complete
- ▼ Formwork to capping beam for north elevation - Ongoing
- ▼ Demolition to L2 Reid slab for in-ground services - Complete
- ▼ Services to L2 Reid trenches - Ongoing
- ▼ Substation landed. HV and LV to be connected late March
- ▼ Scaffold stairs for student access to Reid Building - Ongoing
- ▼ Lift pit excavation - Complete
- ▼ Wall sheeting to Catering - Complete
- ▼ Ceiling framing to Catering - Ongoing
- ▼ Roof sheeting to atrium cool room - Complete
- ▼ Wall sheeting and sarking to atrium cool room - Ongoing
- ▼ Ducting to Catering - Ongoing
- ▼ Kitchen hood installation - Complete
- ▼ Roof scaffolding and plastic wrapping to roof of Catering - Complete



SITE MANAGER
STEVE BURKE
0418 101 014

Upcoming Work

Activities taking place in the coming weeks will include:

- ▼ Piling works for TRL
- ▼ Concrete to capping beam at north elevation for TRL

To facilitate the safety of residents and staff please be cautious of work areas, read all signage and take direction from Buildcorp staff.

- ▼ Builder's work to substation including blockwork and steel gate
- ▼ Ongoing scaffolding to new student access stair to Reid Building
- ▼ Ongoing in-ground services under L2 Reid slab
- ▼ Ongoing wall sheeting and sarking to atrium cool room
- ▼ Ongoing ductwork to Catering
- ▼ Demolition of roof to Catering
- ▼ Formwork, reinforcement and pouring concrete for lift pit for Catering
- ▼ Ceilings being sheeted for Catering
- ▼ Tiling to walls for Catering

Disruption Notices

Upcoming disruptions notices include:

- ▼ Temporary board to roof of Catering



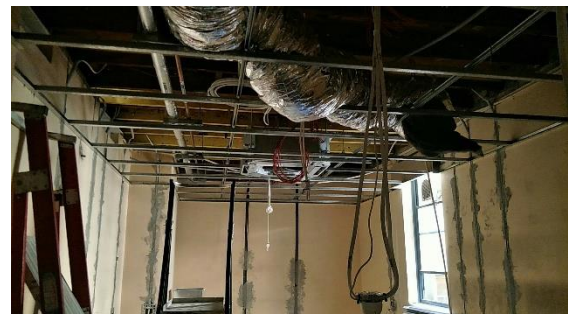
i. Substation Landed



ii. Formwork to capping beam for TRL



iii. Scaffold Roof and Wrapping to Catering



iv. Ductwork and ceiling framing to Catering



11th January 2019

St Andrew's College Development Update

General Notices

- ▼ Works are now in full swing please pay extra attention to site fences, site signage and moving vehicles for your own safety.
- ▼ Western Ave vehicular gate access will now permit truck delivery access and residential parking only. To ensure pedestrian safety during the construction programme, all foot traffic will be via the Cadigal Lane staircase entry only.

Work to date

The past fortnight we have been working on the following:

- ▼ Tying of piling cages - Ongoing
- ▼ Structural demolition of Thyne and Reid Buildings
- ▼ Control survey for the TRL Building
- ▼ Piling for the TRL building - Ongoing
- ▼ Substation building works including footings and wall
- ▼ Above slab rough-in for catering 90% Complete
- ▼ Perimeter scaffold erected for Catering

Upcoming Work

Activities taking place in the coming weeks will include:

- ▼ Piling works for TRL
- ▼ Substation cable installation on Carillon Ave
- ▼ Concrete works for Catering
- ▼ Excavation, piling & structure works for Catering
- ▼ Ongoing services rough-in for Catering

Disruption Notices

Upcoming disruptions notices include:

- ▼ Diversion of sewer
- ▼ Hydrant to Thyne termination
- ▼ Catering power shutdown on 12th January



PROJECT MANAGER
MICHAEL WATSON
0409 831 813



SITE MANAGER
STEVE BURKE
0418 101 014

To facilitate the safety of residents and staff please be cautious of work areas, read all signage and take direction from Buildcorp staff.



i. Piling Works



ii. Reid Façade Demolition



iii. Services Rough-In for Catering



iv. Perimeter Scaffold for Catering



14th December 2018

St Andrew's College Development Update

General Notices

- ▼ Works are now in full swing please pay extra attention to site fences, site signage and moving vehicles for your own safety.
- ▼ Western Ave vehicular gate access will now permit truck delivery access and residential parking only. To ensure pedestrian safety during the construction programme, all foot traffic will be via the Cadigal Lane staircase entry only.

Work to date

The past fortnight we have been working on the following:

- ▼ Piling Cages and platform
- ▼ Internal strip out of Thyne and Reid Buildings ongoing
- ▼ Demolition scaffolding erected – Structural demolition to Thyne commenced
- ▼ Piling to the substation
- ▼ Internal strip out to the catering refurbishment complete
- ▼ Structural demolition to catering ongoing
- ▼ Removal of hazmat material complete, clearance certificate has been issued
- ▼ Stud walls to catering
- ▼ Structural Steel to catering
- ▼ Footings and wall to substation

Upcoming Work

Activities taking place in the coming weeks will include:

- ▼ Ongoing piling works
- ▼ Pouring substation capping beam
- ▼ Internal strip out of Thyne and Reid to continue
- ▼ Continue with services investigation
- ▼ Footings and wall to substation
- ▼ Internal partitions to catering
- ▼ Ongoing structural steel to catering

Disruption Notices

Upcoming disruptions notices include:

- ▼ Diversion of sewer



PROJECT MANAGER
MICHAEL WATSON
0409 831 813



SITE MANAGER
STEVE BURKE
0418 101 014

To facilitate the safety of residents and staff please be cautious of work areas, read all signage and take direction from Buildcorp staff.



i. Piling Cages



ii. Reid Façade Demolition



iii. Stud walls to Catering



iv. Structural Demolition to Catering



30th November 2018

St Andrew's College Development Update

General Notices

- ▼ As the works will ramp up from the 26th November, please pay extra attention to site fences, site signage and moving vehicles for your own safety.
- ▼ Western Ave vehicular gate access will now permit truck delivery access and residential parking only. To ensure pedestrian safety during the construction programme, all foot traffic will be via the Cadigal Lane staircase entry only.

Work to date

The site is now established as we prepare for the next phase of works. The past fortnight we have been working on the following:

- ▼ Access Road – Sealing of access road commenced
- ▼ Investigation works – Ongoing Investigating works have been carried out by the Services and Excavation subcontractors
- ▼ Power relocations have occurred on 24th and 25th November
- ▼ Internal strip out of Thyne and Reid Buildings has commenced
- ▼ Erection of demolition scaffolding has commenced
- ▼ Piling to the substation
- ▼ Internal strip out to the catering refurbishment has commenced
- ▼ Removal of hazmat material from the catering refurbishment has commenced
- ▼ Isolations and hoardings have been erected for the catering refurbishment

Upcoming Work

Activities taking place in the coming weeks will include:

- ▼ Internal strip out of Thyne and Reid to continue
- ▼ Float in of 20t excavator
- ▼ Demolition of façade and slabs to Reid and Thyne Buildings
- ▼ Piling works to commence in the week of 3rd December
- ▼ Ongoing work prior to services relocations
- ▼ Continue with services investigation
- ▼ Continue with access road construction – Road to be sealed
- ▼ Footings and wall to substation
- ▼ Removal of hazmat material from the catering
- ▼ Structural demolition to the catering



PROJECT MANAGER
MICHAEL WATSON
0409 831 813



SITE MANAGER
STEVE BURKE
0418 101 014

To facilitate the safety of residents and staff please be cautious of work areas, read all signage and take direction from Buildcorp staff.

Disruption Notices

Upcoming disruptions notices include:

- Continued access changes to Reid Building
- Demolition of Thyne Building and associated services shutdowns.



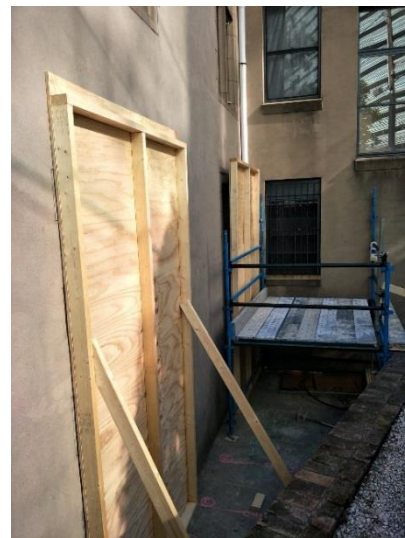
i. Scaffolding to Thyne



ii. Strip out in Thyne



iii. Access road (Sealing Commenced)



iv. Hoarding to Catering



v. Strip out of Catering



16th November 2018

St Andrew's College Development Update

General Notices

- As the works will ramp up from the 26th November, please pay extra attention to site fences, site signage and moving vehicles for your own safety.
- Western Ave vehicular gate access will now permit truck delivery access and residential parking only. To ensure pedestrian safety during the construction programme, all foot traffic will be via the Cadigal Lane staircase entry only.

Work to date

The site is now established as prepare for the next phase of works. The past fortnight we have been working on the following:

- Site Accommodation – Final fit-out of the sheds and pathways
- Access Road – The base of the road is now complete
- Tree Protection, Pruning and Removal – All relevant trees have been protected, pruned or removed as per the Arborists report
- Investigation works – Ongoing Investigating works have been carried out by the Services and Excavation subcontractors
- Preparation works for the power cutovers to Thyne & Reid Buildings on 24th November 2018

Upcoming Work

Activities taking place in the coming weeks will include:

- Demolition of Thyne Building to start in the week of 26th November
- Piling works to start in the week of 26th November
- Ongoing preliminary work prior to services relocations
- Continue with services investigation
- Continue with access road construction

Disruption Notices

Upcoming disruptions notices include:

- Power shutdown for Reid & Thyne Buildings on 24th & 25th November 2018.
- Continued access changes to Reid Building
- Demolition of Thyne Building and associated services shutdowns.



PROJECT MANAGER
MICHAEL WATSON
0409 831 813



SITE MANAGER
STEVE BURKE
0418 101 014

To facilitate the safety of residents and staff please be cautious of work areas, read all signage and take direction from Buildcorp staff.



i. Site Compound



ii. Access Road (Concrete section)



iii. Access road (Concrete section)



iv. Temporary power pole @ Thyne

2nd November 2018

St Andrew's College Development Update

General Notices

Western Ave vehicular gate access will now permit truck delivery access and residential parking only. To ensure pedestrian safety during the construction programme, all foot traffic will be via the Cadigal Lane staircase entry only.

Work to date

It has been a busy start to the project with Buildcorp taking possession of the site on the 17th of October. Since then, we have been working on the following:

- Site Accommodation – Installation of site sheds and facilities for Buildcorp staff & Subcontractors along the western side of the Oval
- Access Road – Construction has commenced on the new access road
- Tree Protection, Pruning and Removal – All relevant trees have been protected, pruned or removed as per the Arborists report
- Site Fencing – Site fencing has been installed to the access road and along the boundary along Carillon Avenue. Temporary fencing has also been installed around the tree protection zone and the site compound
- Investigation works – Investigating works have been carried out by the Services and Excavation subcontractors

Upcoming Work

Activities taking place in the coming weeks will include:

- Installation of site signage
- Installation of temporary power poles
- Preliminary work prior to services relocation
- Continue with services investigation
- Continue with access road construction
- Installation of site signage

Disruption Notices

Upcoming disruptions notices include:

- Power shutdown for Reid & Thyne Buildings on 24th & 25th November 2018.
- Continued access changes to Reid Building



PROJECT MANAGER
MICHAEL WATSON
0409 831 813



SITE MANAGER
STEVE BURKE
0418 101 014

To facilitate the safety of residents and staff please be cautious of work areas, read all signage and take direction from Buildcorp staff.



i. Site Compound



ii. Access Road



iii. Tree Protection Zone



iv. Tree Removal